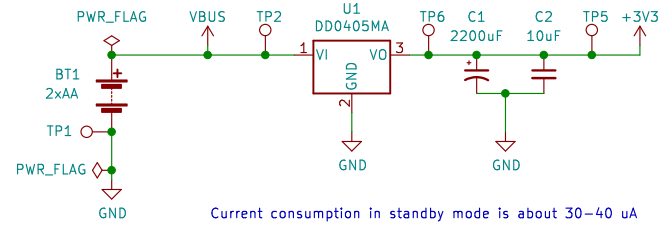
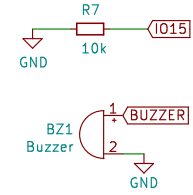
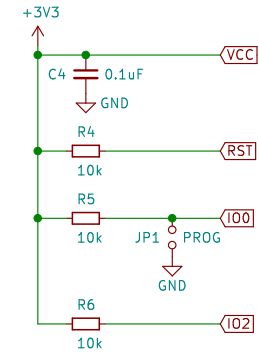
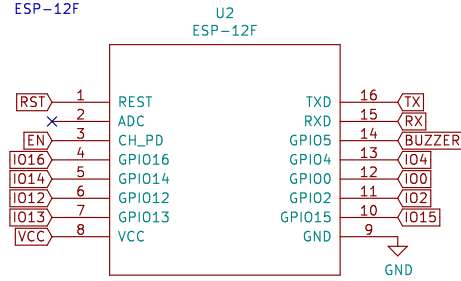


Power rail

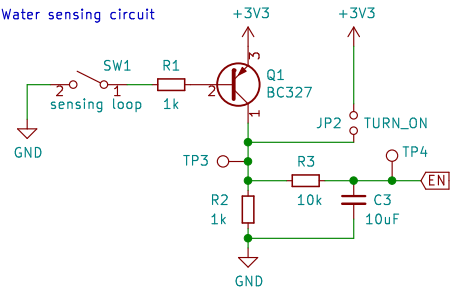


Current consumption in standby mode is about 30-40 uA

ESP-12F

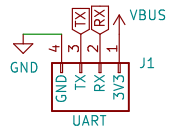


Water sensing circuit



Custom sensor can be connected to SW1

Programming header



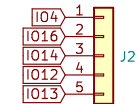
VBUS voltage has to be 3V3, not 5V!
If you provide power through VBUS, remove batteries first.

- To flash program:
1. Short jumper PROG
 2. Connect UART (RXD->TX, TXD->RX)
 3. Short jumper TURN_ON

Mounting holes



Extra pins for custom use



Sheet: /
File: leaky.sch

Title: Leaky

Size: A4
KiCad E.D.A. kicad (5.1.7)-1

Date:
Rev: v1.0
Id: 1/1