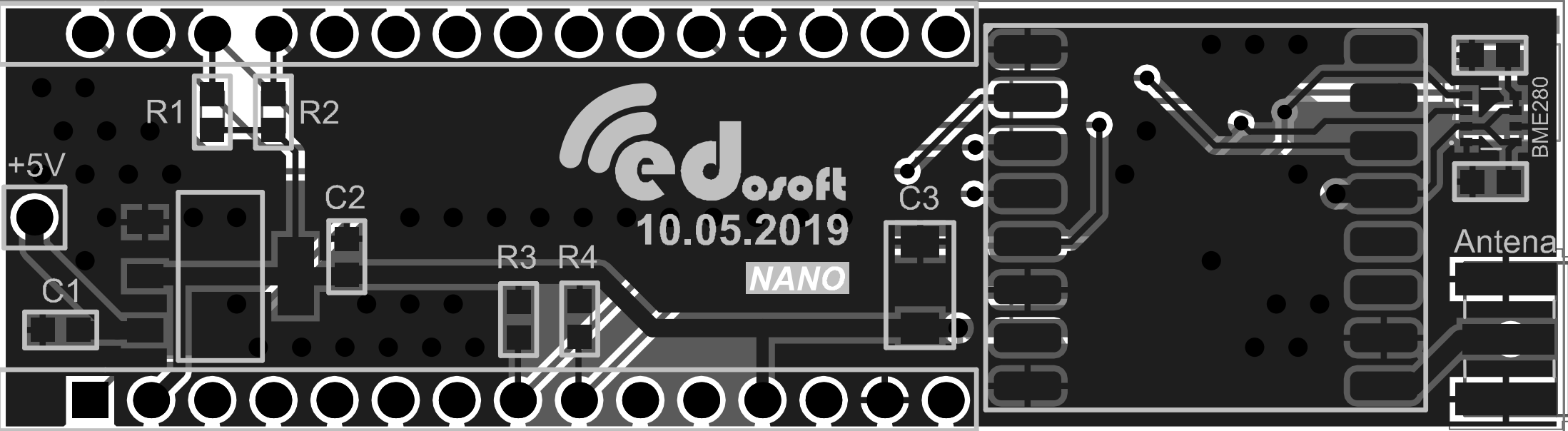


Title		
Size	Number	Revision
A4		
Date:	2. 6. 2019	Sheet of
File:	C:\Users\...\RFM_nano.SchDoc	Drawn By:



+5V

R1

R2

C2

R3

R4

C3

edsoft  
10.05.2019  
NANO

BME280

Antena

Comment	Description	Designator	Footprint	LibRef	Quantity
Arduino nano	Arduino nano	A1	ARDU2X15	Arduino_nano	1
SMA-J-P-H-ST-EM1	SMA connector edge	Antena	SMA_modd_edd	SMA_PCB_5mm	1
CAPACITOR	Capacitor	C1, C2, C4, C5	C0603	CAPACITOR	4
CAPACITOR_uF	Capacitor	C3	TAJB	CAPACITOR_uF	1
LM1117	Voltage Regulator	D1	SOT223_LM3940IMP-3.3(Primary)	LM1117	1
BME280	Integrated Circuit	IC1	BME280	BME280	1
DS18B20	Integrated Circuit	IC2	TO-92 eddy	DS18B20	1
Power	Header, 1-Pin	P1	HDR1	PIN_5V	1
RESISTOR	Resistor	R1, R2, R3, R4	R0603(1608)	RESISTOR	4
RFM69HCW	RFM69 size: 16 x 16 mm	RFM	RFM69HCW	RFM69HCW	1